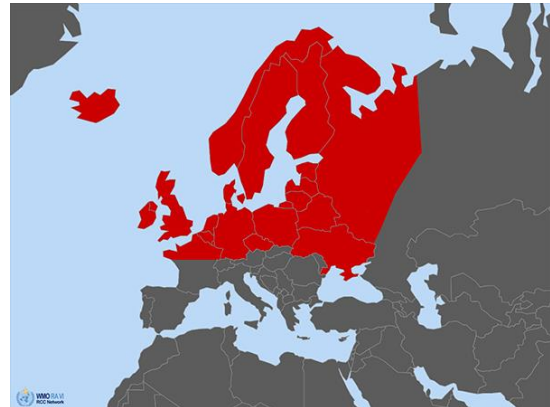


## Guidance on cold wave ID: 202101-u2

**Area concerned:** Iceland, Ireland, United Kingdom, northern France, Luxembourg, Belgium, Netherlands, Germany, Denmark, Norway, Sweden, Finland, Estonia, Latvia, Lithuania, Poland, Czech Republic, Ukraine, Belarus, northern and central European Russia



Initial statement issued on 8 January 2021  
First update issued on 19 January 2021  
Second update issued on 2 February 2021

### Valid:

Begin: 5 February 2021  
End: 19 February 2021

**To:** Climate Watch focal points of NMHS of Iceland, Ireland, United Kingdom, France, Luxembourg, Belgium, Netherlands, Germany, Denmark, Norway, Sweden, Finland, Estonia, Latvia, Lithuania, Poland, Czech Republic, Ukraine, Belarus, Russia

The RA VI RCC Network Offenbach Node on Climate Monitoring (RCC Node-CM) is responsible for providing Climate Watch guidance information for NMHSs' own consideration for issuing climate advisories for their territory.

After having consulted the consortium partners of the RCC Node-CM and RCC Node-LRF (RA VI RCC Network Toulouse and Moscow Node on Long-Range Forecasting), RCC Node-CM issues the following guidance information:

### **Due to the results from monthly forecasts, we expect:**

**"Below-normal temperatures with partly severe frost in Northern, Northwestern, Central and Eastern Europe in the next two weeks. The cold wave is extending from Northern Europe to Northwestern, Central and large parts of Eastern Europe until next week (8-14 February) and will likely intensify. In the following week, it will likely remain in much of Scandinavia, the Baltic countries and northern European Russia, while for the other parts of the concerned area this is not sure. Weekly anomalies next week will be between -1°C in Iceland and Ireland and below -10°C in northeastern European Russia. In the following week, anomalies will be weaker. Absolute daily minimum temperatures will vary between close to 0°C in Ireland to temporarily around -35°C in northeastern European Russia. Probabilities for this development are above 80-90% for next week and 60-90% for the following week. The cold wave requires preparations to prevent severe frost damage."**

This information should be used as guidance for the National Meteorological and Hydrological Services (NMHS) in a pre-operational mode. It is up to the above-mentioned NMHSs to monitor the status and evolution of the current climate conditions closely and to consider issuing a national Climate Watch Advisory. RCC Node-CM would appreciate feedback from NMHS whether this information was helpful. Also, any suggestion on further pieces of information needed by NMHSs is highly welcomed!

# Climate Watch Advisory



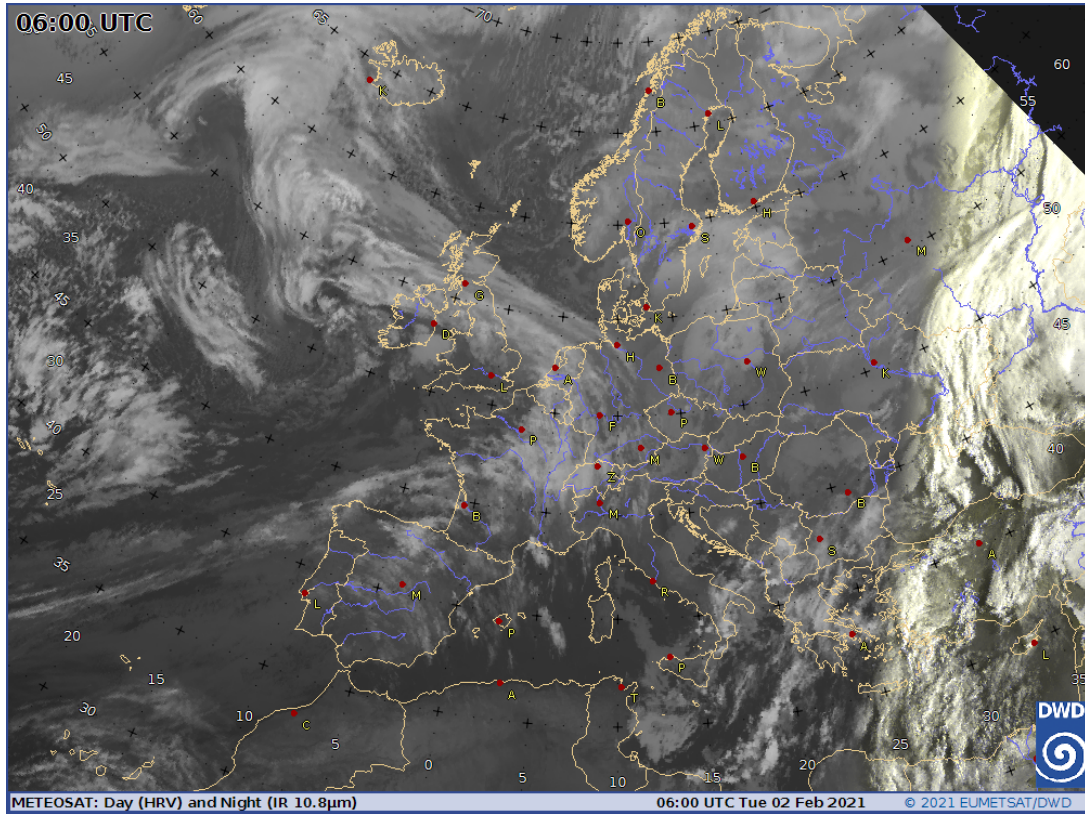
A template for a national climate watch advisory can be provided by DWD on request as agreed among the climate watch pilots and RCC Node-CM.

Please note that further information can be obtained from RCC Node-CM website (<https://rcccm.dwd.de>) concerning Climate Monitoring and from RCC Node-LRF websites (<http://seasonal.meteo.fr> , <http://neacc.meteoinfo.ru/forecast>) concerning Long-Range Forecast or by e-mail to [rcc.cm@dwd.de](mailto:rcc.cm@dwd.de) or [rcc-lrf-mf@meteo.fr](mailto:rcc-lrf-mf@meteo.fr). For ECMWF member's further information on monthly forecasts after logging in is provided at <http://www.ecmwf.int/> ->Forecasts

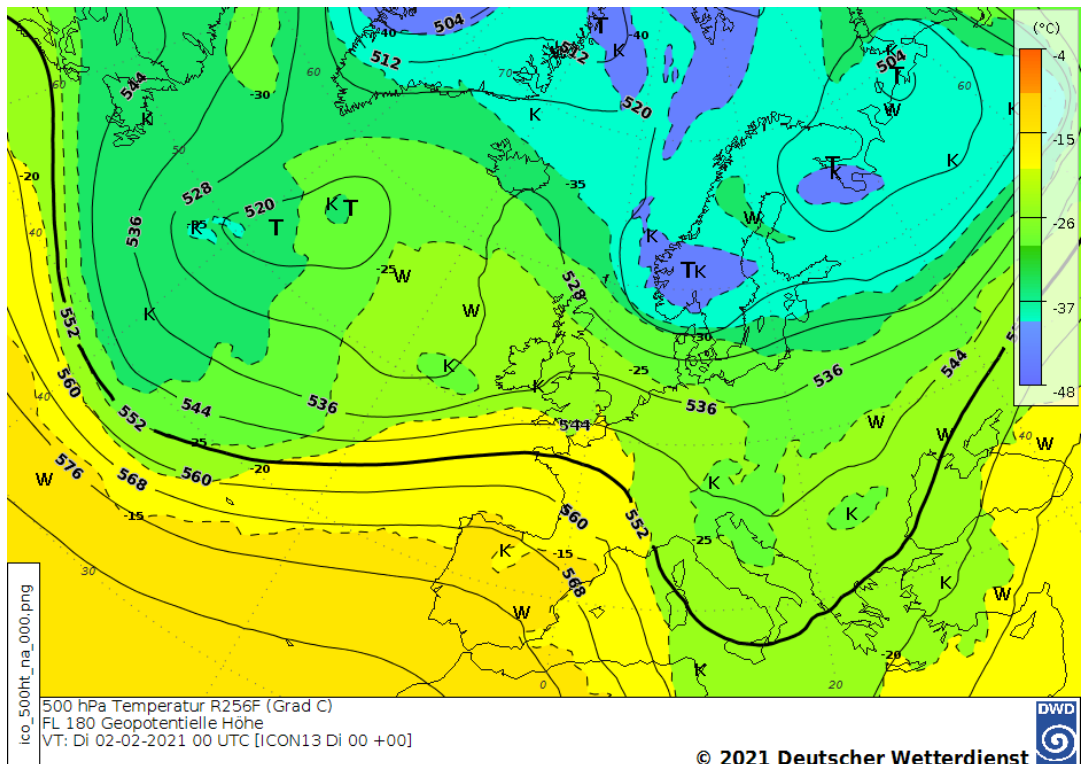
We will monitor the evolution of the anomaly, issue updates if significant change arise and close the advice when no clear signal can be detected in the forecasts.

On behalf of the RCC Node-CM Team

## Supplementary material

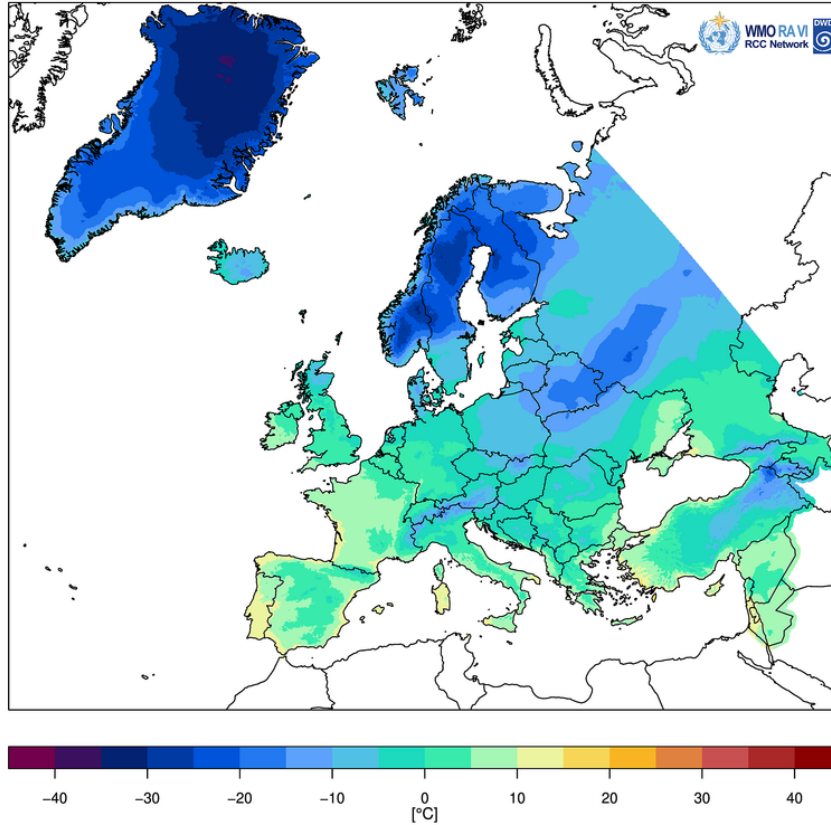


Meteosat satellite image 2 February 2021, 06 UTC. Source: DWD

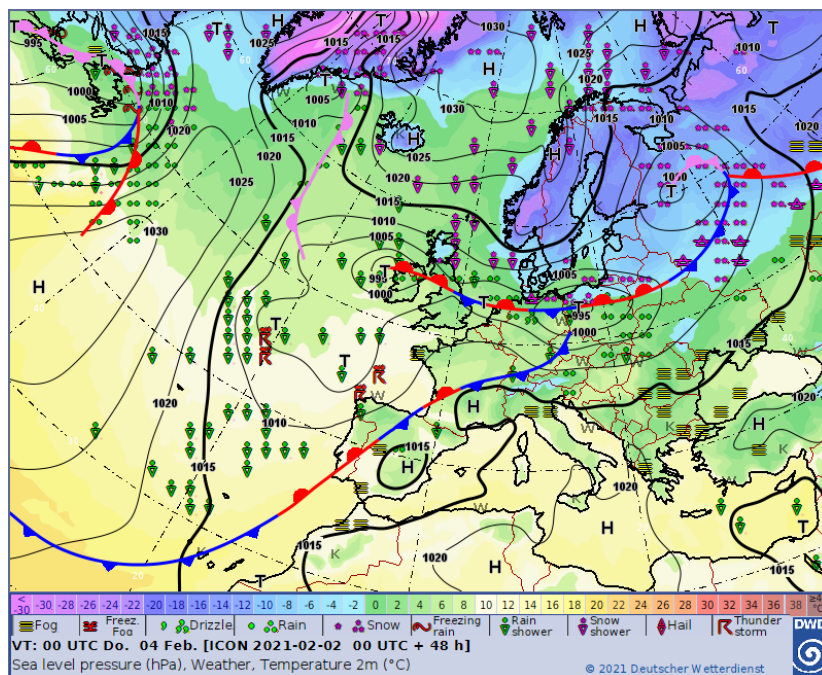


500-hPa chart, 2 February 2021, 00 UTC. Source: DWD

Tägliche Minimumtemperatur: 2. Februar 2021 (Europa)  
 Daily Minimum Temperature: 2 February 2021 (Europe)



Map of daily minimum temperature for 2 February 2021, Source: DWD



Forecast chart for 4 February 2021, 00 UTC, Source: DWD,  
[https://www.dwd.de/EN/ourservices/hobbymet\\_wcharts\\_europe/hobbyeuropecharts.html](https://www.dwd.de/EN/ourservices/hobbymet_wcharts_europe/hobbyeuropecharts.html)